

Wexford County Food Pantries

SALVATION ARMY OF WEXFORD, MISSAUKEE AND KALKASKA

725 Wright St, Cadillac, MI 49601

Monday-Friday 1:00pm-3:00pm

231-775-7131

[Website](#)

THE TABERNACLE FOOD PANTRY

The Tabernacle- Buckley Campus

205 Pine St, Buckley, MI 49620

Wednesdays 3:00-6:00pm & Saturdays

9:00am-12:00pm

231-570-2788

COLFAX COMMUNITY CHURCH FOOD PANTRY

2010 E. 16 Rd, Manton, MI 49663

1st, 3rd and 5th Thursdays

Please call 231-824-6170 for more
details

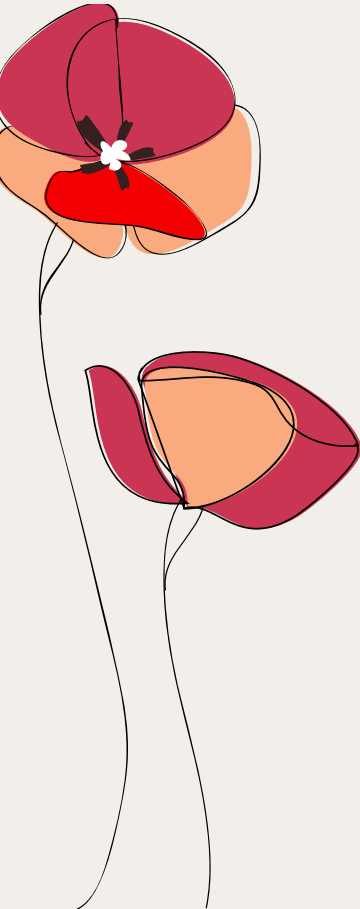
LIFEHOUSE FOOD BANK

Lifehouse Assembly of God

1120 W. Division St, Cadillac, MI 49601

2nd & 4th Mondays from 3:30pm-5:00pm

231-775-7858



Wexford County Food Pantries

COMMUNITY FOOD PANTRY

Cadillac Revival Center

984 Plett Rd, Cadillac, MI 49601

Wednesdays 10:00am and 3rd Mondays 6:00pm

231-775-2662

KING'S STOREHOUSE

First Baptist Church of Cadillac

125 E. Stimson St, Cadillac, MI 49601

Mondays, Wednesdays & Fridays

10:00am-11:00am

231-775-5629

[Website](#)

FAMILY CARE NETWORK

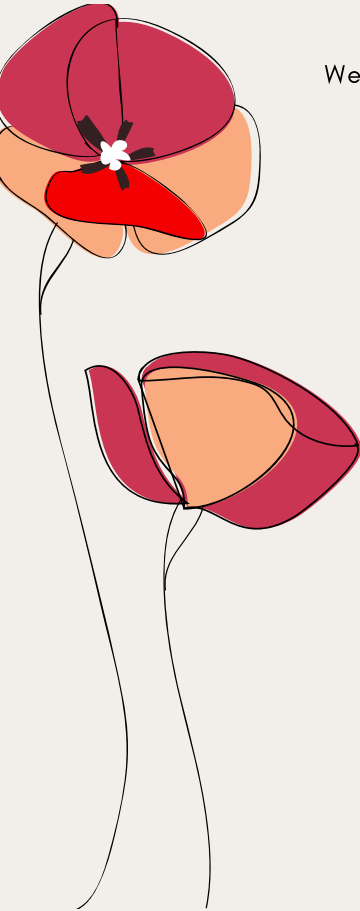
Living Word Ministries

800 S. Michigan, Manton, MI 49663

Mondays 9:00am-12:00pm

231-824-6502

[Facebook](#)



Wexford County Food Pantries

NORTHERN LIGHT CHURCH FOOD PANTRY

115 Cobb Street, Cadillac, MI 49601

Tuesdays 12:00pm-2:00pm

Please call 231-942-8019 for more
information

MESICK COMMUNITY FOOD PANTRY

Mesick United Methodist Church

121 S. Alvin St, Mesick, MI 49688

Thursdays 3:30-5:00pm

(231) 885-1699

[Facebook](#)

MANTON FOOD PANTRY

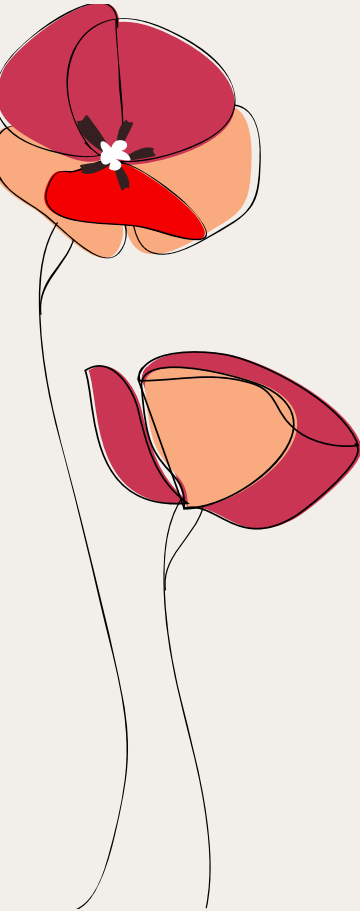
Manton Free Methodist Church

201 N. Michigan Ave, Manton, MI 49663

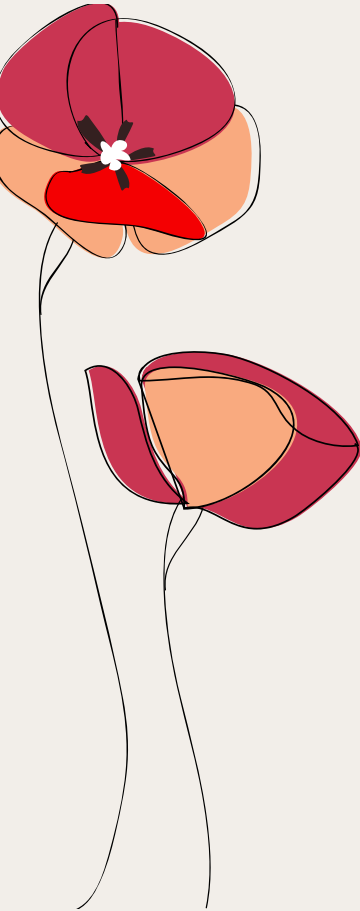
1. Gleaners Food Pantry: 1st Thursday of
the month at 11:00am

2. Emergency Food Pantry

Please call 231-878-2206 to make an
appointment



Wexford County Farmers Markets



CADILLAC FARMERS MARKET

Cadillac Commons Marketplace
117 W. Cass St, Cadillac, MI 49601
Tuesdays & Fridays 8:00am-4:30pm

Mid-June through October

231-775-6310

[Website](#)

[Facebook](#)

WALRAVEN'S MARKET

6120 M-115, Cadillac, MI 49601
Open daily from 8:00am-8:00pm

April-November

231-775-7599

[Website](#)

[Facebook](#)

Wexford County Low or No Cost Nutrition Programs

FOR MORE INFORMATION CONTACT:

MICHIGAN STATE UNIVERSITY EXTENSION

Wexford County MSU- Extension
401 N Lake St, Ste 400, Cadillac, MI 49601
231-779-9480

[Website](#)

[Facebook](#)

DISTRICT HEALTH DEPARTMENT #10

Wexford County- District Health
Department #10
521 Cobb St A, Cadillac, MI 49601
231-775-7599

[Website](#)

[Facebook](#)

